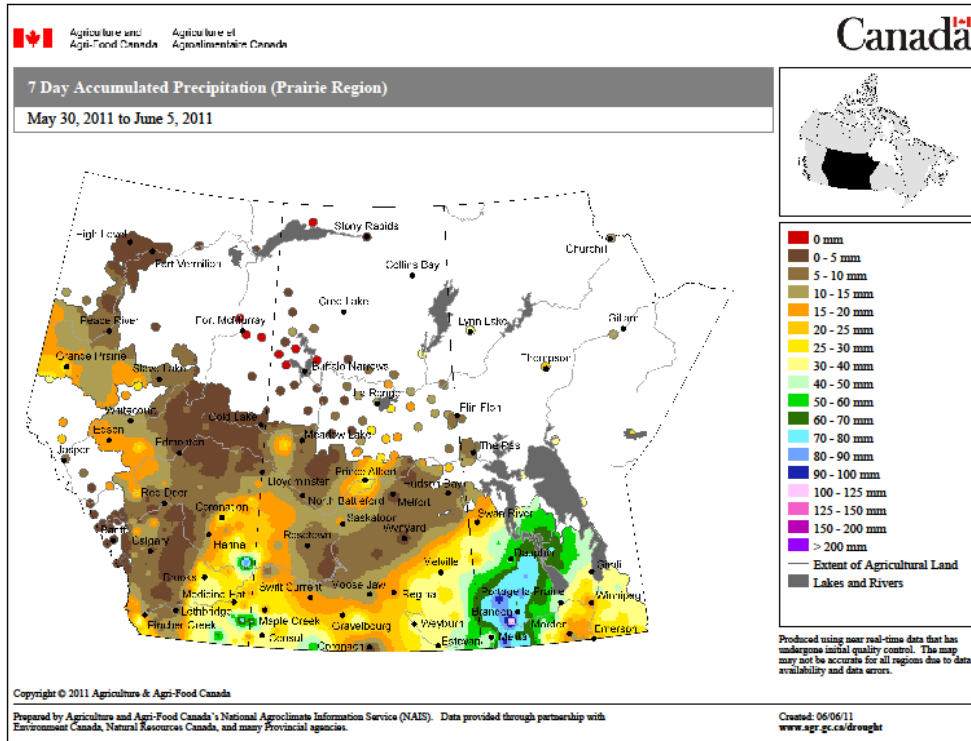
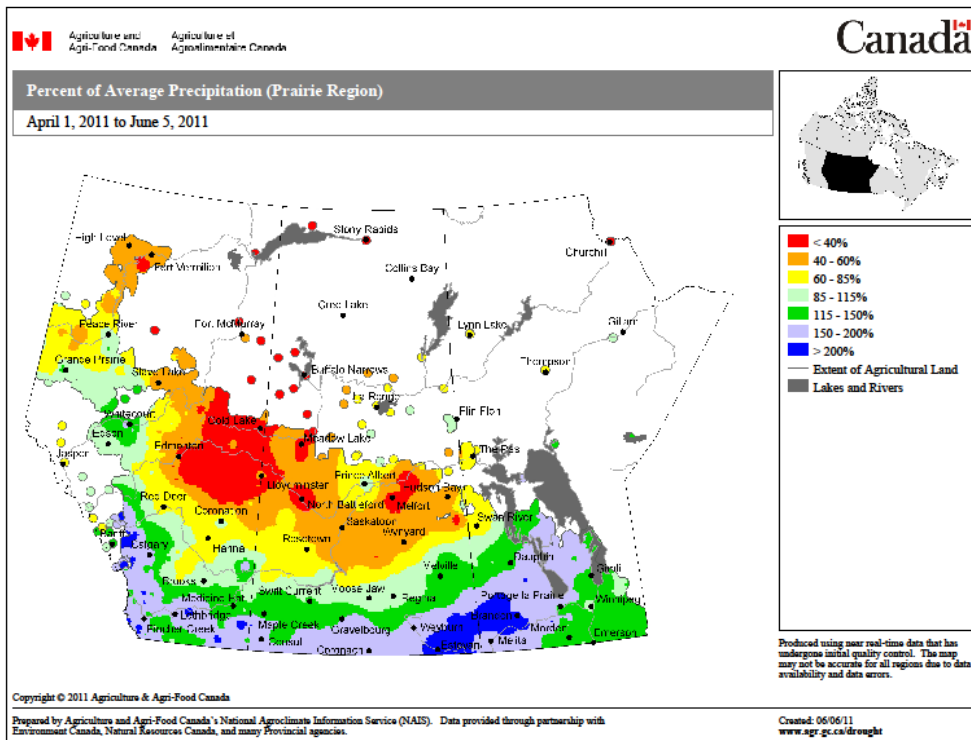


Prairie Pest Monitoring Network Weekly Updates – May 30 - June 3, 2011
Weiss, Olfert, Dolatre – AAFC Saskatoon & Otani – AAFC Beaverlodge

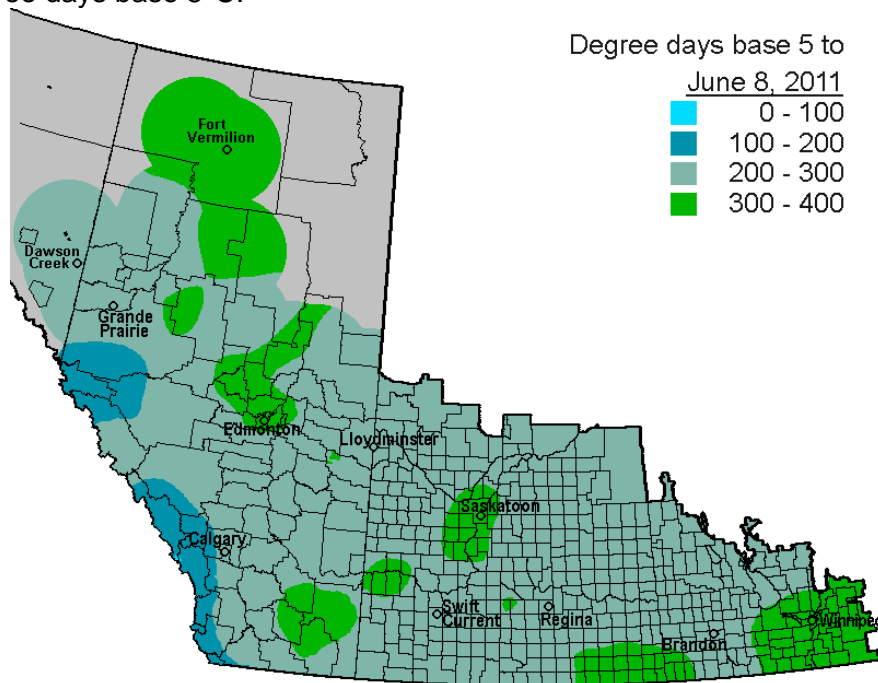
- Weather synopsis** – Western MB received significant amounts of rainfall from May 30- June 5. Southwest SK and eastern AB received 30-50 mm of rain.



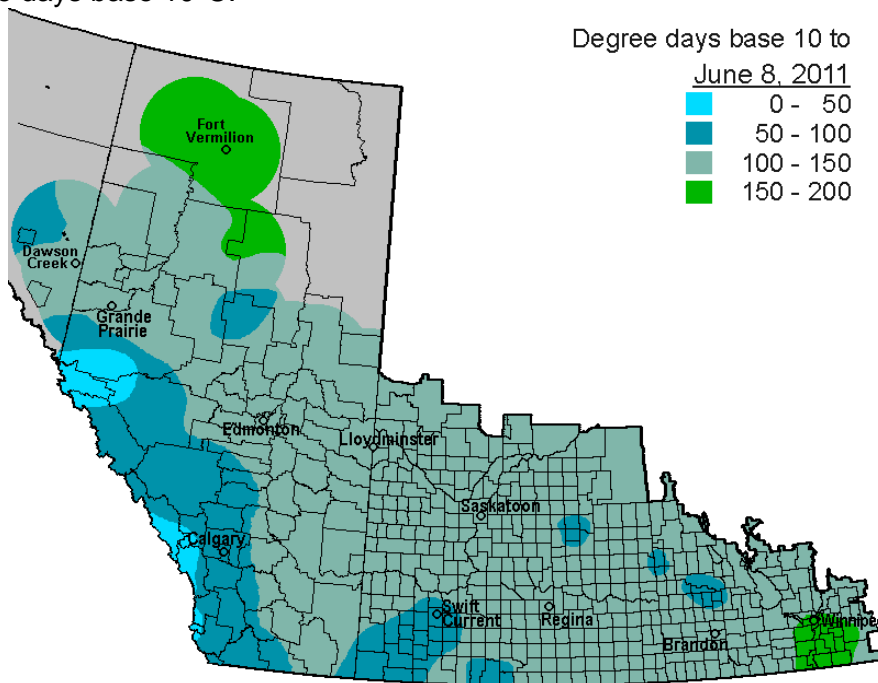
Rainfall amounts for April 1- June 5 continue to be below normal for central regions. Recent rainfall has occurred across AB and SK while conditions are wetter than normal across the south and in MB. Rainfall amounts in MB are 100 or more mm above normal.



This is an update on the growing season in terms of **heat units**. Here are the maps for across the prairies starting with Degree days base 5°C:



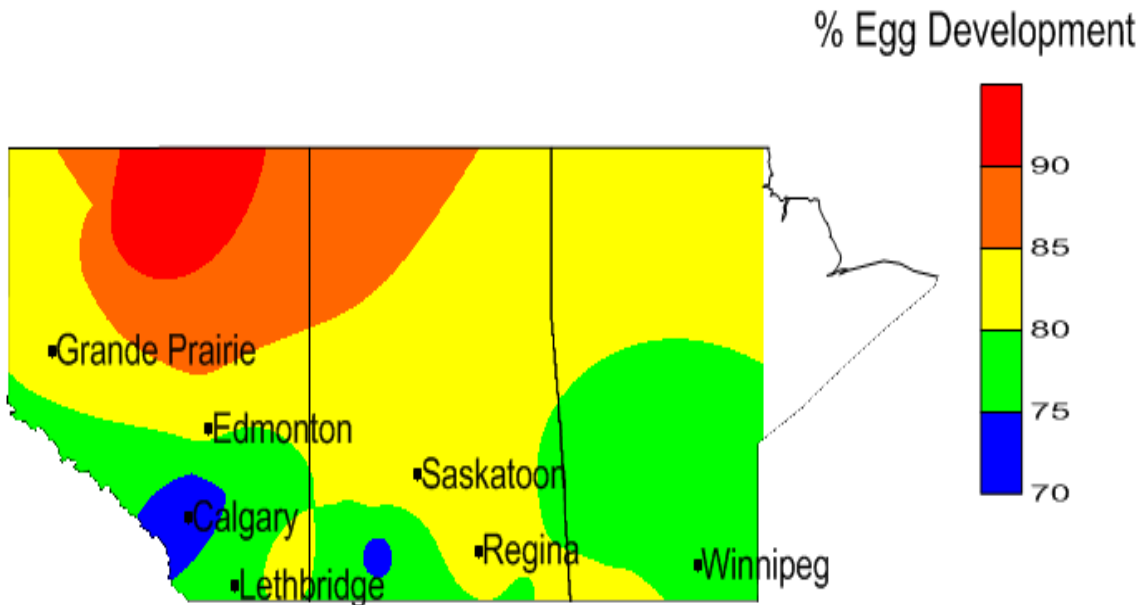
....And for Degree days base 10°C:



2. **Flea beetles** – A number of acres in the south Peace River region received foliar applications of insecticide to control flea beetle damage. Most of these fields are now moving into the mid-rosette stages this week.
3. **Wind trajectories** – For the week of May 31 – June 6 there were 22 prairie locations that had wind events that originated over Washington and Oregon (Pacific Northwest – PNW). There were 11 locations exposed to wind events originating in Texas and Mexico. These locations were located in MB and SK.

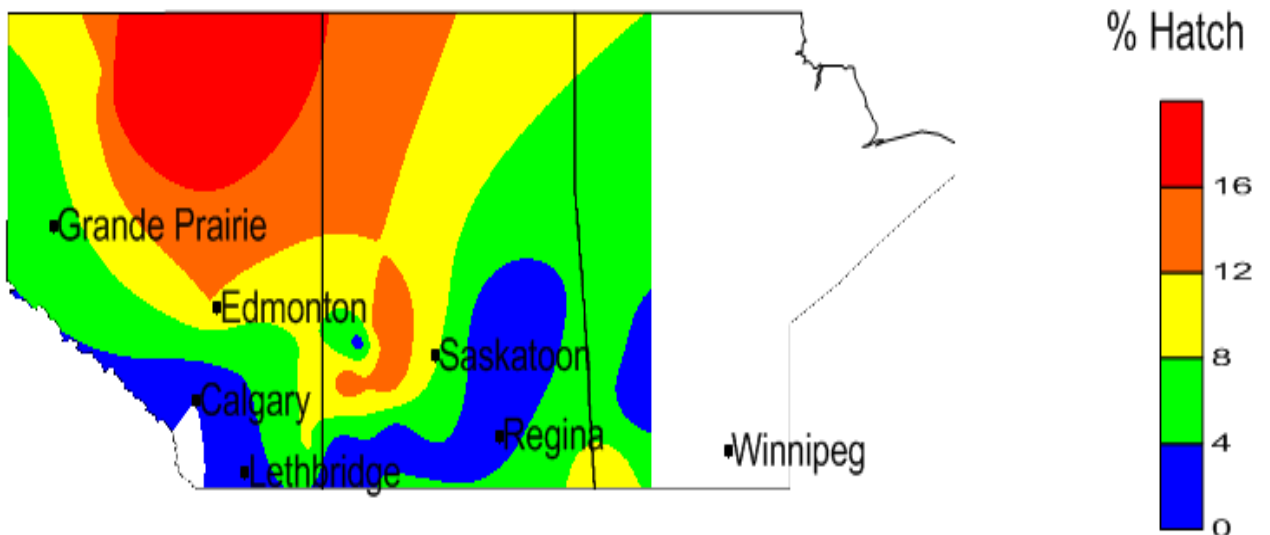
4. **Grasshoppers** - Over the past week there has been a marginal increase in grasshopper egg development. Egg development was greatest in AB, particularly in the Fort Vermillion region, and slowest across the southern prairies.

Melanoplus sanguinipes Egg Development (June 6, 2011)



The model also predicted that grasshopper hatch is just beginning in most locations. First and second instars were predicted to occur in a number of locations including near Fort Vermillion, Kindersley and Rosetown.

Melanoplus sanguinipes Hatch (June 6, 2011)



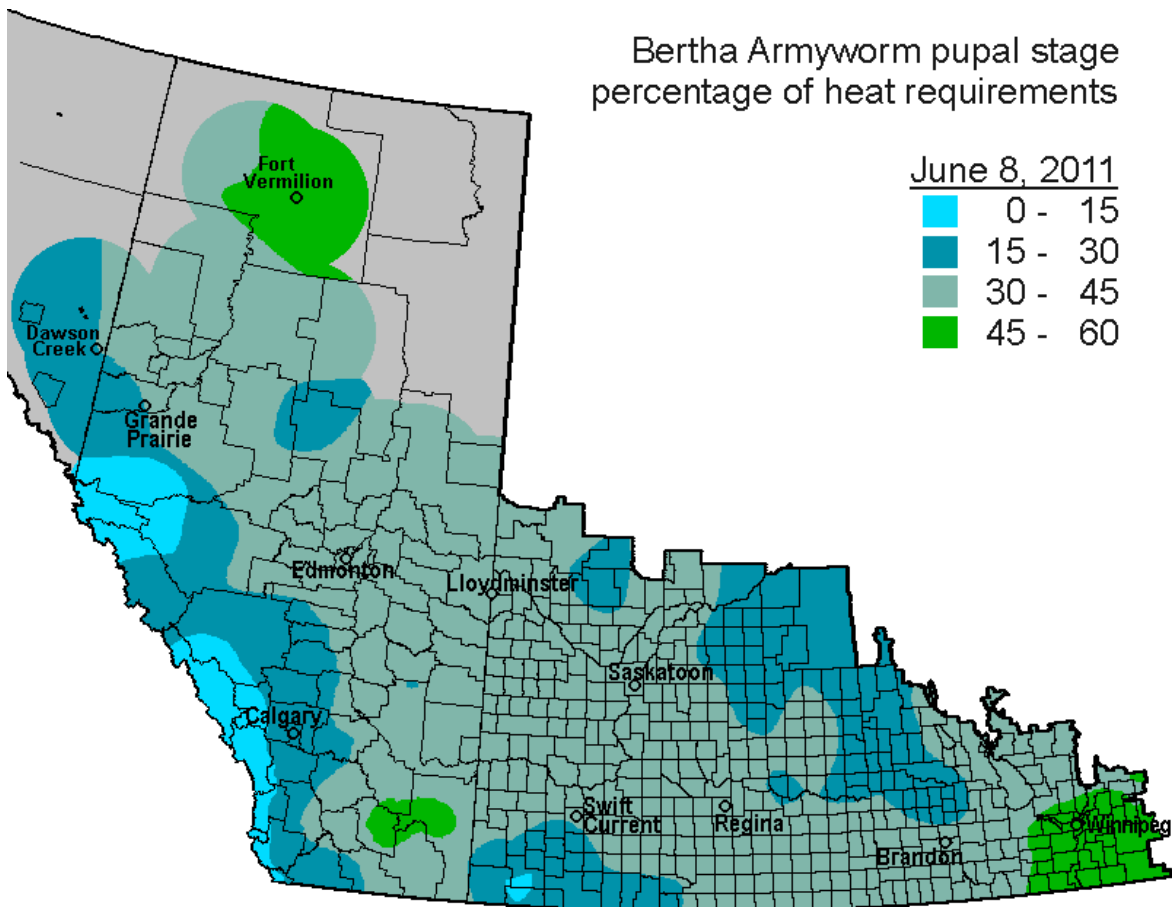
On June 7th we began our grasshopper sentinel site collections between Saskatoon and Rosetown. We collected a few first and second instar nymphs. First, second and third instar nymphs were collected on June 3rd south of Falher AB and similar instar stages were reported near Fort Vermillion on June 8th.

Help with grasshopper monitoring can be located on the provincial websites:

- a) Alberta: [http://www1.agric.gov.ab.ca/\\$department/deptdocs.nsf/all/agdex6463](http://www1.agric.gov.ab.ca/$department/deptdocs.nsf/all/agdex6463)
- b) Saskatchewan: <http://www.agriculture.gov.sk.ca/Default.aspx?DN=626d78ef-2444-4fae-98fc-95e05d88e759>
- c) Manitoba: <http://www.gov.mb.ca/agriculture/crops/insects/fad10s00.html>).

Additionally, the Prairie Pest Monitoring Network's [Grasshopper Monitoring Protocol](#) can be found by using the link then looking down the website page to click on "Grasshoppers".

- 5. **Cutworms** – Dingy, Bristly, and Glassy cutworms plus sod webworms have been retrieved from timothy, creeping red fescue and select canola fields this spring in the south Peace River region. The link provided will take you to the Prairie Pest Monitoring Network's newly posted [Cutworm Larval Collecting Protocol](#) (look at the bottom of the website page then click on "Cutworm" to open).
- 6. **Bertha Armyworm** – The following is an updated map showing the percentage of heat requirements accumulated so far for BAW pupal development across the prairies:



The following table indicates when pupal populations should have achieved 80% development. The table should serve as an approximate guideline to determine **when traps should be placed in the field**. Note that traps should be placed **prior to these dates**.

Location	Date
Fort Vermilion AB	09-Jun-11
Melita MB	16-Jun-11
Medicine Hat AB	17-Jun-11
Estevan AB	18-Jun-11
Brandon MB	19-Jun-11
Regina SK	19-Jun-11
Saskatoon SK	20-Jun-11
Kindersley SK	21-Jun-11
Lethbridge AB	21-Jun-11
Prince Albert SK	21-Jun-11
Fairview AB	22-Jun-11
Melfort SK	22-Jun-11
Rosetown SK	22-Jun-11
Dauphin MB	23-Jun-11
High Level AB	23-Jun-11
Val-Marie SK	23-Jun-11
Edmonton AB	24-Jun-11
Manning AB	24-Jun-11
Maple Creek SK	24-Jun-11
Grande Prairie AB	25-Jun-11
Scott SK	25-Jun-11
Swan River MB	26-Jun-11
Swift Current SK	26-Jun-11
North Battleford SK	28-Jun-11
Halkirk AB	29-Jun-11
RedDeer AB	30-Jun-11
Calgary AB	01-Jul-11

For those of you needing a refresher on how to set up the BAW pheromone traps, please refer to the Prairie Pest Monitoring Network's [Bertha Armyworm Monitoring Protocol](#) for guidance (move down the website page and click on "Bertha armyworm"). Note too that this protocol was updated with an economic threshold table that encompasses current commodity prices.

7. **Lygus bugs** –The Prairie Pest monitoring Network's [Lygus Monitoring Protocol](#) can be found by following the link then clicking on "Lygus bugs" mid-way down the website page.
8. **Thank you** to those of you who reviewed and updated the above documents and to Dr. Kelly Turkington for posting them on the Western Forum / Western Committee on Crop Pests website!