

# Bi-Weekly Update

Volume 1, Issue 1  
June 15, 2016



## WEEK 1 Flea Beetle Monitoring

### 2016 TARGET INSECT PESTS

Flea Beetle  
Bertha Armyworm  
Diamond Back Moths  
Wheat Midge  
Swede Midge  
Lygus Bugs  
Grasshoppers

Monitoring for flea beetle species began June 3, 2016. Three flea beetle monitoring locations were set up in canola fields throughout the BC Peace; Flatrock (River Crest Farms), Doe River (Doe Creek Farms) and Tower Lake (Critchler Farms). Jennifer Otani's pest monitoring program at AAFC Beaverlodge also has two locations: one in Baldonnel and one in Rolla. Two striped flea beetles are still the predominant species found on the sticky cards in the first week. Fields were inspected for damage however due to the excellent growing and moisture conditions that the sites currently have there was minimal damage to the canola seedlings.



Sticky card used for flea beetle monitoring

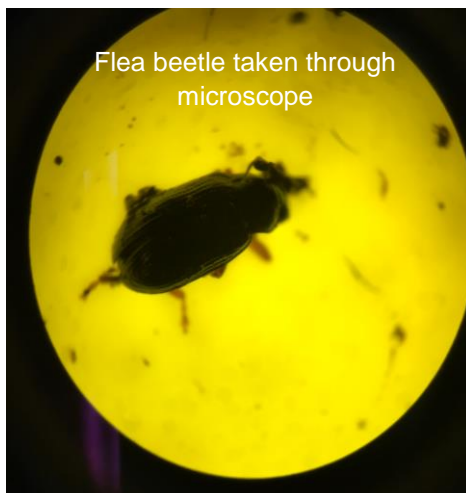
### CONTACT INFO:

401-114Ave  
Dawson Creek, BC  
V1G 2Z7

Phone:  
Jennifer Critcher  
(250)219-3284

E-mail address:  
pest@bcgain.com

Or tweet us  
@BCPPM



## Difficulties Obtaining Supplies

The goal for the season was to use pheromone traps to monitor Bertha Armyworms and Diamond Back Moths beginning late April - early May, as has been done in previous years. Due to supply issues the pheromones used to bait these traps have been back ordered. We hope to have the pheromones by June 20<sup>th</sup> to begin monitoring of these species.

## BC Pest Monitoring Bi-Weekly Update

### Fungicide Application anyone?

Another focus of the project for the 2016 season are fungicide applications. We are looking to partner with some producers who are interested in applying fungicide on one of their fields.

Due to the wet conditions, fungicide application may be a really big "bang for your buck" this year and the pest monitoring project is interested in capturing some local field based information.

You have a field you think would be a good fit for this project please give Jennifer Critcher @ 250-219-3284 a call or e-mail pest@bcgain.com



### Pest Picture of the Week

Thanks **Alexandra Frias Luna of Crop Production Services** for sending in this great grasshopper picture



Check out the WEB for more Weekly updates from:

#### **The Prairie Pest Monitoring Network**

Visit

<http://prairiepestmonitoring.blogspot.ca/p/2016-weekly-updates.html>

#### **Canola Council**

Also Visit <http://www.canolawatch.org/> for weekly updates on pest issues effecting Canola

*Special thanks to our sponsors and supporters of the project as well as the farmers that have made available their fields to be used for monitoring*



DELIVERED BY



FUNDING PROVIDED BY



BRITISH COLUMBIA

Canada